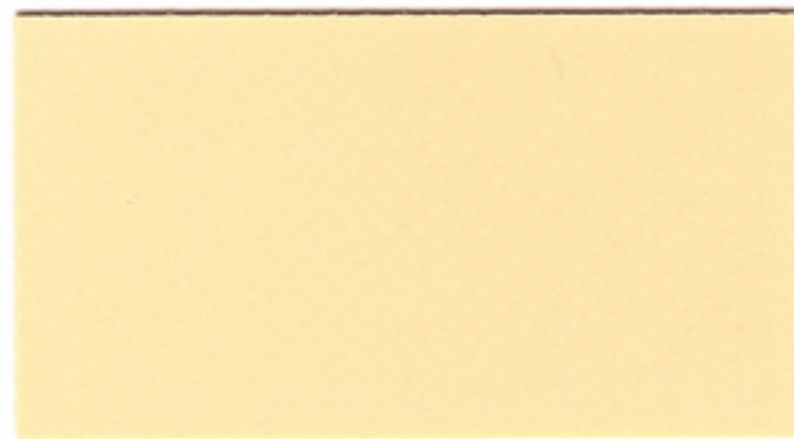


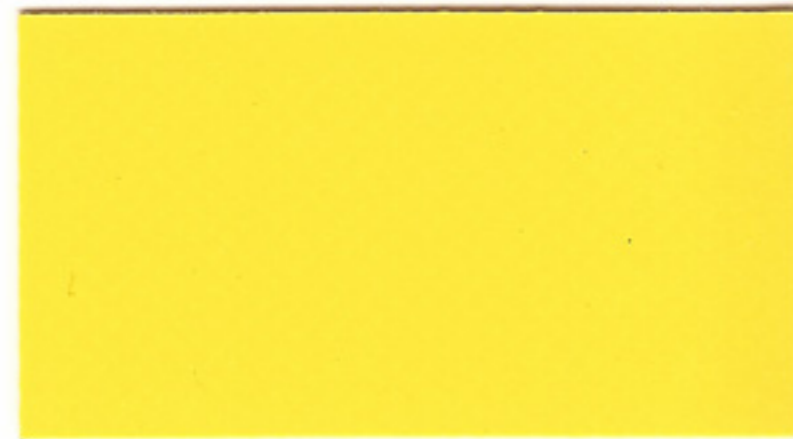
**B9000/9002**



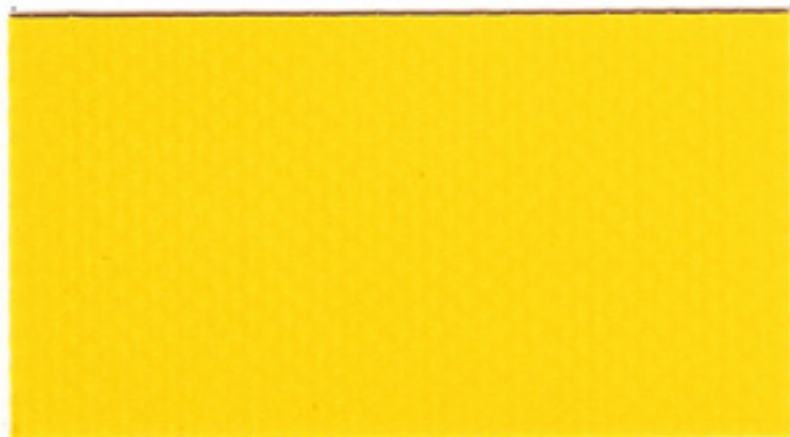
**1002** - 250cm (RAL-)



**1003** - 250cm (RAL1014)



**1018** - 250cm (RAL1018)



**1021** - 218, 250cm (RAL1021)



**1024** - 218, 250, 275cm (RAL1003)



**1059** - 250cm (RAL1032)



**3001** - 250cm (RAL-)



**3015** - 250cm (RAL3002)



**3018** - 250cm (RAL-)



**5001** - 250cm (RAL-)



**5003** - 250cm (RAL5012)



**5007** - 250cm (RAL-)



**5020** - 218, 250cm (RAL-)



**5029** - 218, 250cm (RAL-)



**5032** - 250cm (RAL-)



**5038** - 250cm (RAL-)



**6001** - 218, 250cm (RAL-)



**6047** - 250cm (RAL-)





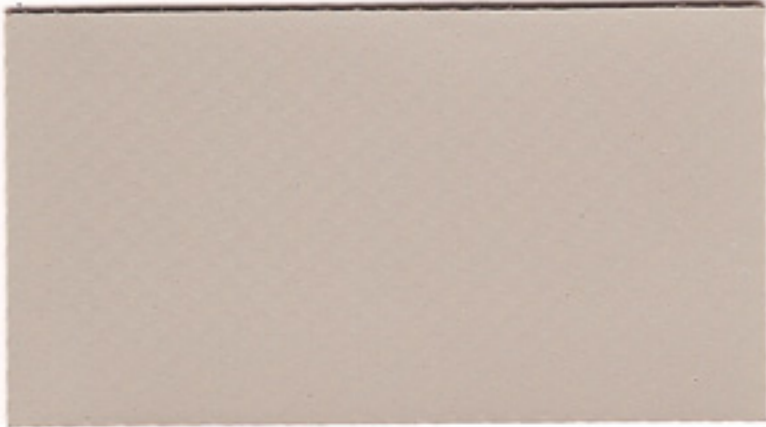
**6002** - 250cm (RAL6001)



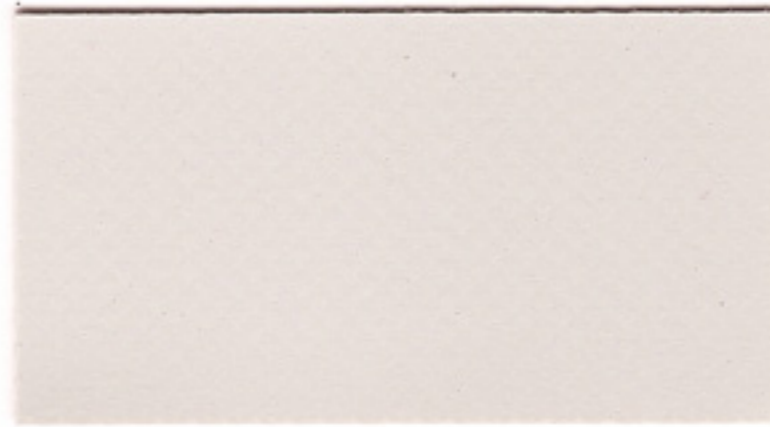
**6027** - 250cm (RAL6018)



**6028** - 250cm (RAL6005)



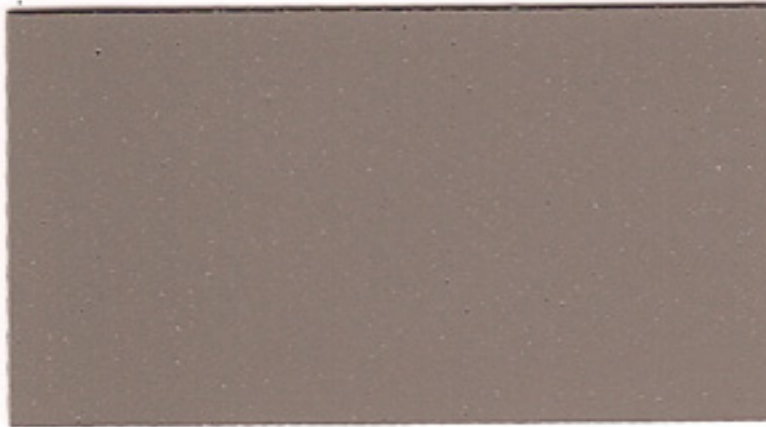
**7001** - 218, 250cm (RAL-)



**7002** - 250cm (RAL7035)



**7003** - 218, 250cm (RAL-)



**7024** - 250cm (RAL-)



**7500** - 218, 250, 275, 300cm (RAL9006)



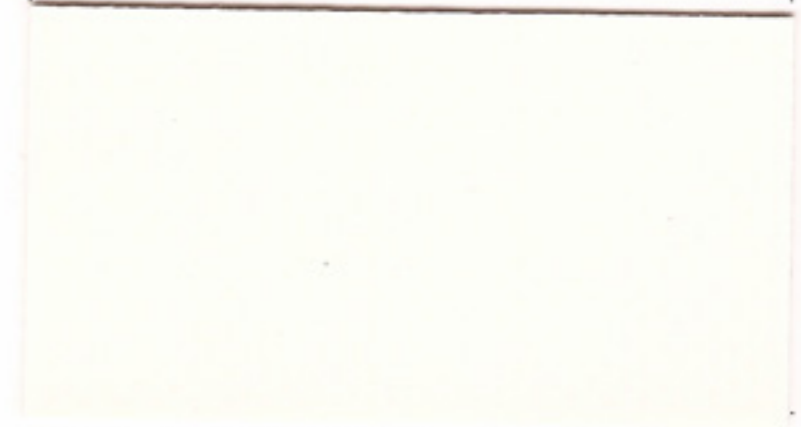
**7999** - 218, 250cm (RAL9005)



**8020** - 250cm (RAL8017)



**9002** - 150, 218, 238, 250, 275, 300cm (RAL-)



**9013** - 250, 275, 300cm (RAL9010)



weefsel/tissu/fabric Gewebe/tejido		100% PES 1100 dtex	
coating/enduction Beschichtung/revestimiento		PVC	
gewicht/poids/weight Gewicht/peso total		680 g/m <sup>2</sup>	DIN EN ISO 2286-2
vernislacquerung/Lackierung/lacado		1/1	
kalander/calandre/Embossing/kalander		Glossy	
treksterkte résistance rupture breaking strength Höchstzugkraft resistencia a la ruptura	ketting/warp/chaîne Kette/urdimbre	3000 N/5cm	EN ISO 1421 meth 1
	inslag/weft/trame Schuß/trama	2800 N/5cm	
scheurweerstand résistance à la déchirure tear strength Weiterreißfestigkeit resistencia a la rasgadura	ketting/warp/chaîne Kette/urdimbre	300 N	DIN 53 363
	inslag/weft/trame Schuß/trama	300 N	
hechting/adhérence/adhesion Haftung/adherencia		90 N/5cm	EN ISO 2411
temperatuurbestendigheid tenu à la température temperature resistance Temperaturbeständigkeit resistencia a la temperatura		-30 °C/+70°C	DIN EN 1876-2
lichtechtheid tenu à la lumière light fastness Lichtechtheit resistencia a la luz	(uitgezonderd wit en (semi-) transparant) (excepté en blanc et (semi-) transparent) (except white and (half-) transparent) (außer Weiß und (Semi-)transparent) (excepto blanco/(Semi-)transparente)	7-8	ISO 105 B02
onbrandbaarheid/inflammabilité flammability/Flammbarkeit/inflamabilidad		<100 mm/min	ISO 3795
toepassing application application Anwendung aplicación	truck-covers bâches camions truck covers LKW-Planen lona para camión		