

W20/20/3500 100% PES

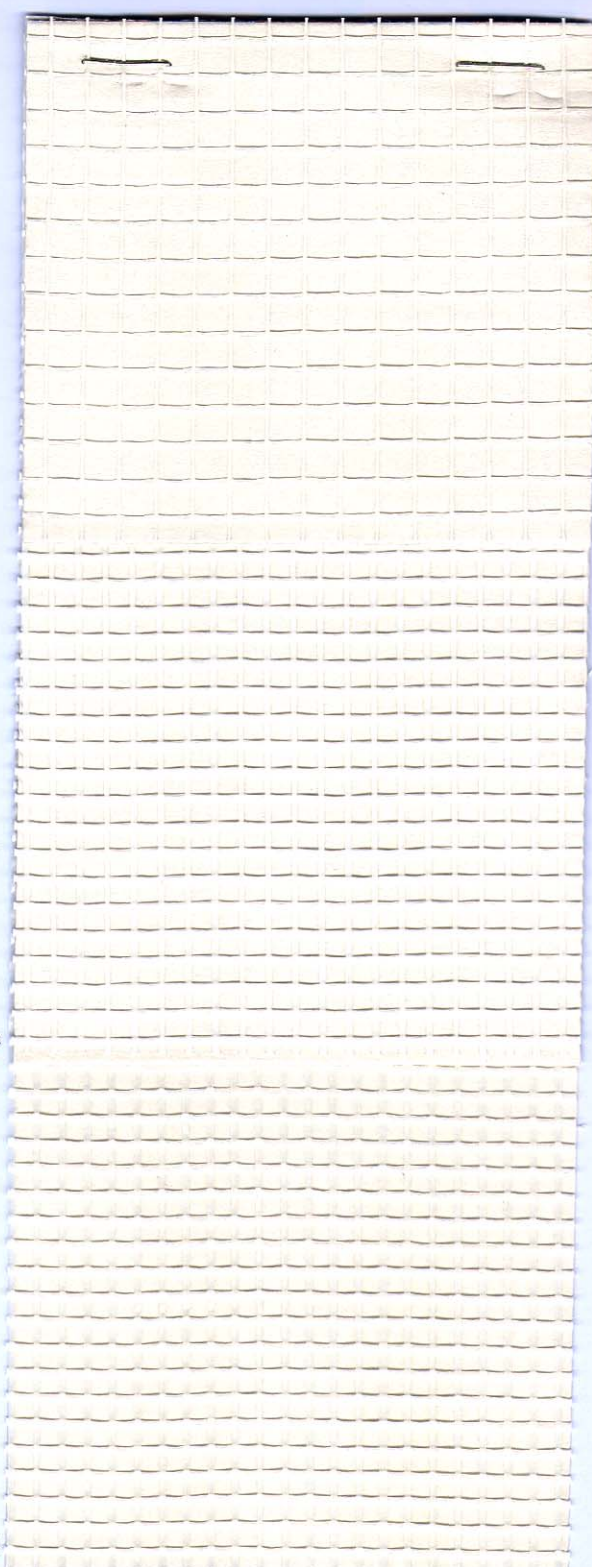
1 280 dtex	2 550 dtex
3 Leno	4 50g/m ²
5 20	6 20
7 22g/m ²	8 28g/m ² PVC
9 -/-	10 360 N/5cm
11 360 N/5cm	12 -
13 -	14 >15%
15 >15%	16 -
17 -30°C/+70°C	18 -
19 -	20 M2
21 versterkingstextiel of kunststoffen renforcement de textile ou plastic renforcement for textile or plastics stärkung von Textilien oder Kunststoffe textil de refuerzo o plásticos de refuerzo	

W28/28/0100 100% PES

1 1100 dtex	2 -
3 L 1:1	4 93g/m ²
5 28	6 28
7 61g/m ²	8 32g/m ² PVC
9 -/-	10 1050 N/5cm
11 1050 N/5cm	12 <3,5%
13 <2,0%	14 >15%
15 >15%	16 -
17 -	18 -
19 -	20 -
21 versterking dakbedekking & zwembadfolies renforcement toitures & toiles de piscines renforcement roofing & swimmingpool liners Verstärkung Dachbanen & Schwimmbadfolien refuerzo del material para techos y revestimientos de piscina	

W30/30/3600 100% PES

1 1100 dtex	2 -
3 L 1:1	4 125g/m ²
5 30	6 30
7 66g/m ²	8 59g/m ² PVC
9 -/-	10 1050 N/5cm
11 1050 N/5cm	12 <3,5%
13 <2,0%	14 >15%
15 >15%	16 -
17 -30°C/+70°C	18 -
19 -	20 -
21 versterking dakbedekking & zwembadfolies renforcement toitures & toiles de piscines renforcement roofing & swimmingpool liners Verstärkung Dachbanen & Schwimmbadfolien refuerzo del material para techos y revestimientos de piscina	



W50/44/2000 100% PES

1 280 dtex	2 -
3 L 1:1	4 70g/m ²
5 50	6 44
7 27g/m ²	8 43g/m ² PVC
9 -/-	10 450 N/5cm
11 390 N/5cm	12 -
13 -	14 >15%
15 >15%	16 -
17 -30°C/+70°C	18 -
19 -	20 M2
21 versterkingstextiel of kunststoffen renforcement de textile ou plastic reinforcement for textile or plastics Verstärkung von Textilien oder Kunststoffe textil de refuerzo o plásticos de refuerzo	

W100A4600 100% PES

1 140 dtex	2 -
3 L 1:1	4 37g/m ²
5 100	6 100
7 28g/m ²	8 9g/m ² PVC
9 -/-	10 320 N/5cm
11 300 N/5cm	12 -
13 -	14 >15%
15 >15%	16 -
17 -30°C/+70°C	18 -
19 -	20 -
21 gipsversterking renforcement de plâtre reinforcement of plaster Verputzverstärkung refuerzo del yeso	

M3102/6601/7999 - 210cm 100% PES

1 1100 dtex	2 -
3 L 1:1	4 125g/m ²
5 30	6 15
7 50g/m ²	8 75g/m ² PVC
9 -/-	10 1100 N/5cm
11 550 N/5cm	12 -
13 -	14 >15%
15 >15%	16 25 N/5cm
17 -30°C/+70°C	18 6 - 8
19 20%	20 -
21 o.a. vogelschermeren e.a. filets d'oiseaux e.g. birdshields u.a. Vögelschutz entre otros pantallas protectoras de pájaros	



M3302/6601, 7999 - 210cm

100% PES

1 1100 dtex	2 -
3 L 1:1	4 160g/m ²
5 30	6 30
7 66g/m ²	8 94g/m ² PVC
9 -/-	10 1100 N/5cm
11 1100 N/5cm	12 -
13 -	14 >15%
15 >15%	16 40 N/5cm
17 -30°C/+70°C	18 6 - 8
19 50%	20 -

21 o.a. vogelschermen
e.a. filets d'oiseaux
e.g. birdshields
u.a. Vögelschutz
entre otros pantallas protectoras de pájaros

M5508/6601, 7999 - 210cm / 6601, 7999,

5603 - 360cm 100% PES

1 1100 dtex	2 -
3 L 1:1	4 250g/m ²
5 50	6 48
7 110g/m ²	8 140g/m ² PVC
9 -/-	10 1900 N/5cm
11 1825 N/5cm	12 -
13 -	14 >15%
15 >15%	16 35 N/5cm
17 -30°C/+70°C	18 6 - 8
19 75%	20 -

21 o.a. windzeilen
e.a. pare-vents
e.g. windshields
u.a. Windschirme
entre otros paravientos

M5509/5601, 6602, 9917, 1398 - 210cm

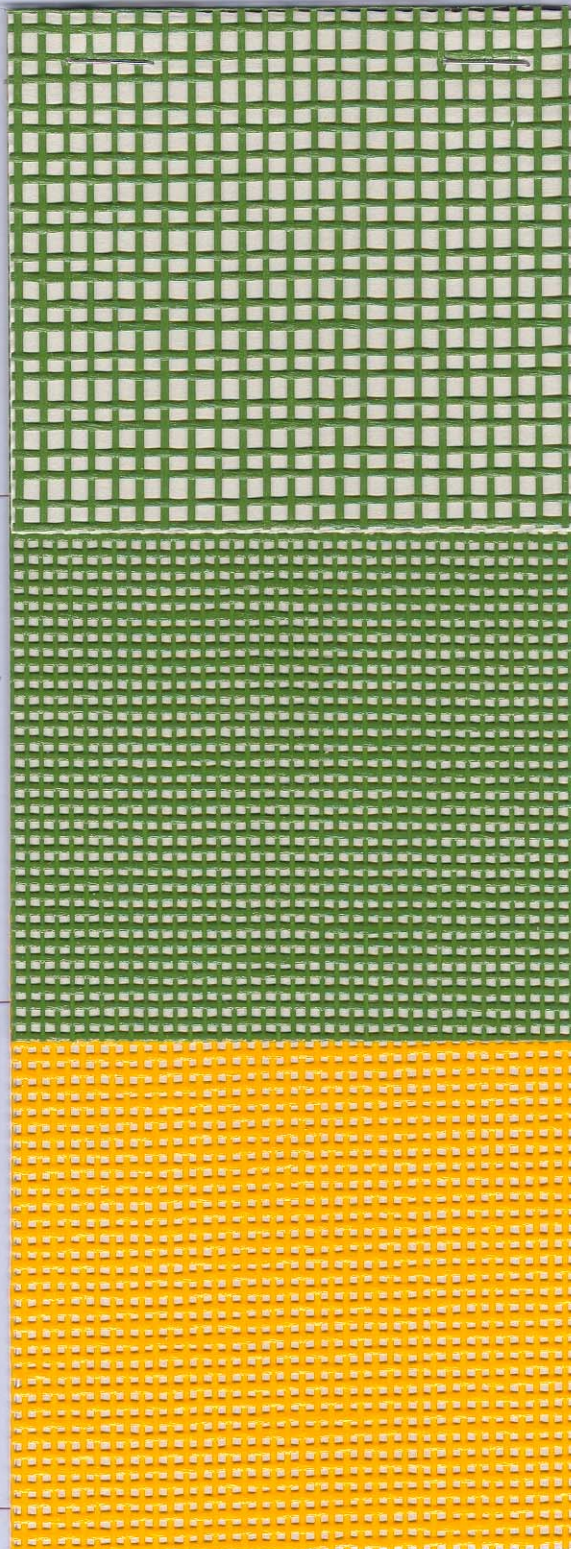
7999, 1399, 6601 - 210/320 cm/

NEW: 7601, 8601, 3130 - 210cm

100% PES

1 1100 dtex	2 -
3 L 1:1	4 250g/m ²
5 50	6 48
7 110g/m ²	8 140g/m ² PVC
9 -/-	10 1900 N/5cm
11 1825 N/5cm	12 -
13 -	14 >15%
15 >15%	16 40 N/5cm
17 -30°C/+70°C	18 6 - 8
19 90%	20 -

21 o.a. windzeilen - e.a. pare-vents
e.g. windshields - u.a. Windschirme
entre otros paravientos



M6602/5601, 6602 - 200cm 100% PES

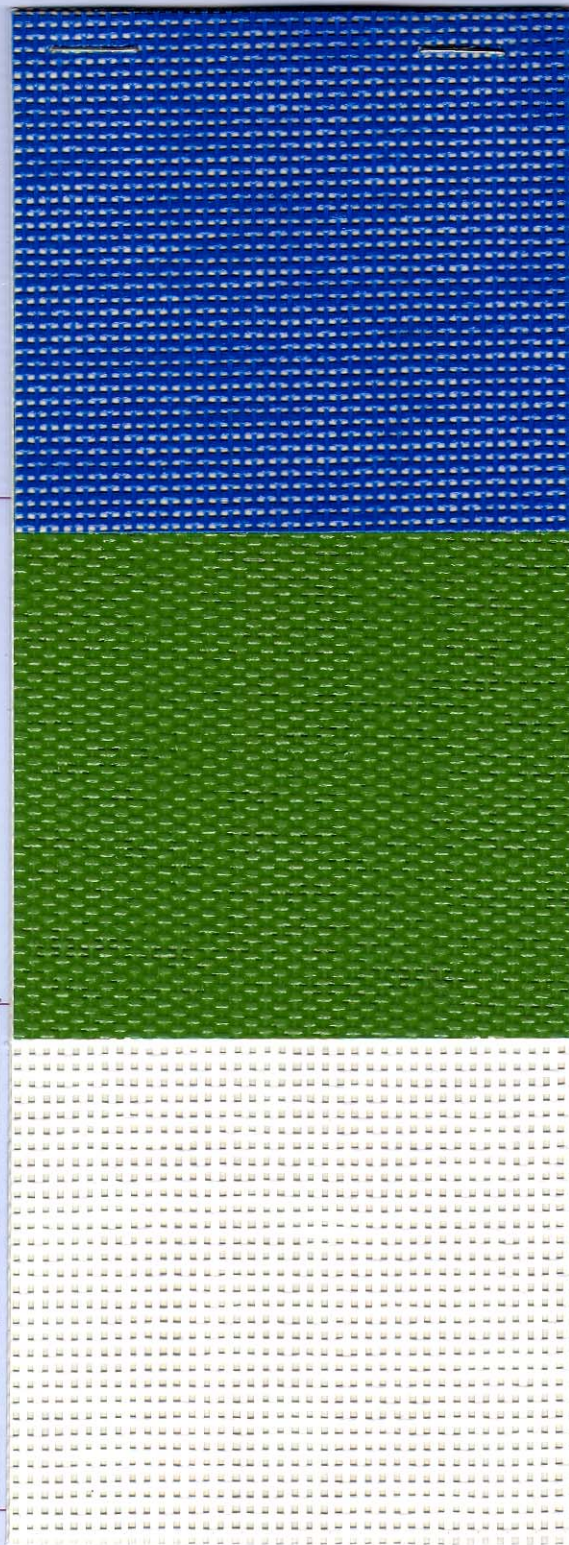
1	1100 dtex	2	-
3	L 1:1	4	280g/m ²
5	60	6	58
7	130g/m ²	8	150g/m ² PVC
9	-/-	10	2250 N/5cm
11	2200 N/5cm	12	-
13	-	14	>15%
15	>15%	16	35 N/5cm
17	-30°C/+70°C	18	6 - 8
19	-	20	-
21	o.a. zwembadafdekkingen e.a. couvertures de piscine e.g. swimming pool-covers u.a. Schwimmbad-abdeckung entre otros cubrepiscinas		

M5802 - 6601, 7999, 1399 210,320cm
100% PES

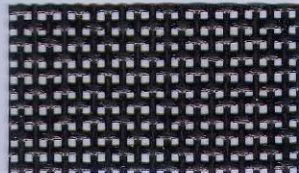
1	1100 dtex	2	-
3	L 1:1	4	350g/m ²
5	50/95	6	75
7	160g/m ²	8	190g/m ² PVC
9	-/-	10	2000 N/5cm
11	2650 N/5cm	12	-
13	-	14	>15%
15	>15%	16	50 N/5cm
17	-30°C/+70°C	18	6 - 8
19	98%	20	-
21	o.a. windzeilen e.a. pare-vents e.g. windshields u.a. Windschirme entre otros paravientos		

M5550 - 210,320cm 100% PES

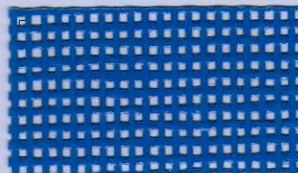
1	1100 dtex	2	-
3	L 1:1	4	250g/m ²
5	50	6	48
7	110g/m ²	8	140g/m ² PVC
9	-	10	1900 N/5cm
11	1825 N/5cm	12	-
13	-	14	>15%
15	>15%	16	55 N/5cm
17	-30°C/+70°C	18	6 - 8
19	90%	20	-
21	publiciteit publicité publicity Werbung publicidad		



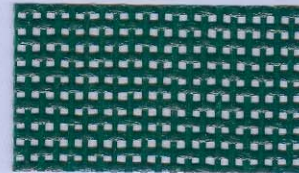
COLOUR REFERENCES



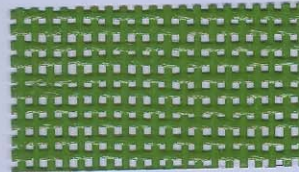
7999



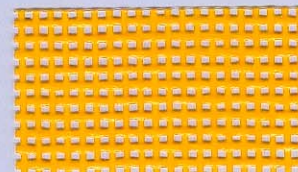
5601



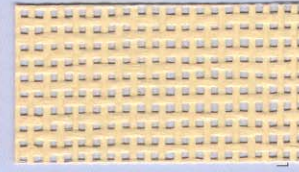
6602



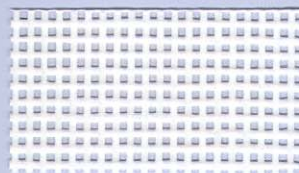
6601



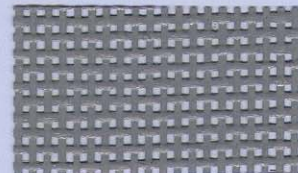
1398



1399

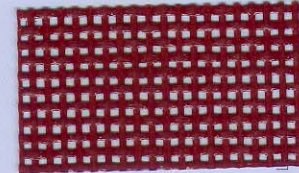


9917



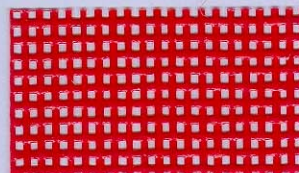
7601

NEW!



8601

NEW!



3130

NEW!

- 1 weefsel-ketting / tissu-chaîne / fabric-warp / Gewebe-Kette / tejido-urdimbre
- 2 weefsel-inslag / tissu-trame / fabric-weft / Gewebe-Schuß / tejido-trama
- 3 binding / liaison / weaving type / Bindung / textura
- 4 gewicht / poids / weight / Gewicht / peso total
- 5 contextuur-ketting / contexture-chaîne / construction-warp / Konstruktion-Kette / contextura-urdimbre
- 6 contextuur-inslag / contexture-trame / construction-weft / Konstruktion-Schuß / contextura-trama
- 7 samenstelling-weefsel / composition-tissu / composition-fabric / Zusammensetzung-Gewebe / composición-tejido
- 8 samenstelling-coating / composition-enduction / composition-enduction / Zusammensetzung-Beschichtung / composición-revestimiento
- 9 vernis / lacquering / Lackierung / lacado
- 10 treksterkte-ketting / résistance rupture-chaîne / breaking strength-warp / Höchstzugkraft-Kette / resistencia a la ruptura-urdimbre
- 11 treksterkte-inslag / résistance rupture-trame / breaking strength-weft / Höchstzugkraft-Schuß / resistencia a la ruptura-trama
- 12 krimp bij 200°C/10min-ketting / retrait à 200°C/10minutes-chaîne / shrinkage at 200°C/10minutes-warp / Schrumpf nach 10 min. bei 200°C-Kette / encogimiento con 200°C/10minutos-urdimbre
- 13 krimp bij 200°C/10min-inslag / retrait à 200°C/10minutes-trame / shrinkage at 200°C/10minutes-weft / Schrumpf nach 10 min. bei 200°C-Schuß / encogimiento con 200°C/10minutos-trama
- 14 breukverlenging-ketting / allongement sous charge déterminée-chaîne / elongation-warp / Reißdehnung-Kette / alargamiento del nave-urdimbre
- 15 breukverlenging-inslag / allongement sous charge déterminée-trame / elongation-weft / Reißdehnung-Schuß / alargamiento del nave-trama
- 16 hechting / adhérence / adhesion / Haftung / adherencia
- 17 temperatuurbestendigheid / tenue à la température / temperature resistance / Temperaturbeständigkeit / resistencia a la temperatura
- 18 lichtechtheid (uitgezonderd wit) / tenue à la lumière (excepté en blanc) / light fastness (except white) / Lichtechtheit (außer Weiß) / resistencia a la luz (excepto blanco)
- 19 windreductie / réduction de vent / wind reduction / Windverkleinerung / reducción del viento
- 20 onbrandbaarheid / inflammabilité / flammability / Flammpaarkeit / inflamabilidad
- 21 toepassing / application / application / Anwendung / aplicación